

产品描述:

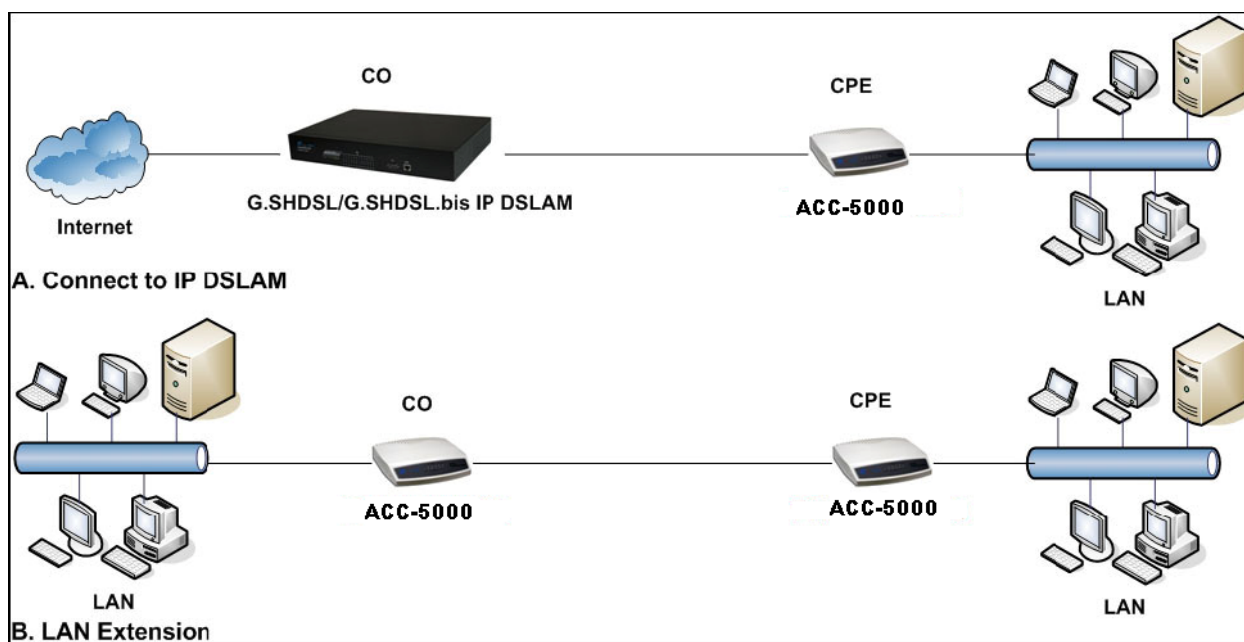
ACC5000 是业内第一款 G.SHDSL.bis 产品。在对称传输时,最高速率可达 22.76Mbps,实现了铜线传输超高速率的突破。ACC5000 有 ACC5000-4W, ACC5000-8W 两种型号,可以实现单线对,双线对,三线对及四线对工作模式,分别可以达到 5.69Mbps、11.38Mbps、17.07Mbps、22.76Mbps。设备同时提供四个以太网口,可同时连接四个以太网设备,可为用户减少交换机方面的投资,非常方便。对于提供 LAN 扩展和 INTERNET 访问的商家,ISP 和 IPTV 服务商来说,应用 ACC5000 是非常理想的。例如在网络会议、电视会议和繁重的双向数据传输等商业用途中,管理起来简单快捷,使用户可以很容易的通过端口例如 TELNET、Web、超级终端等方式来设置。



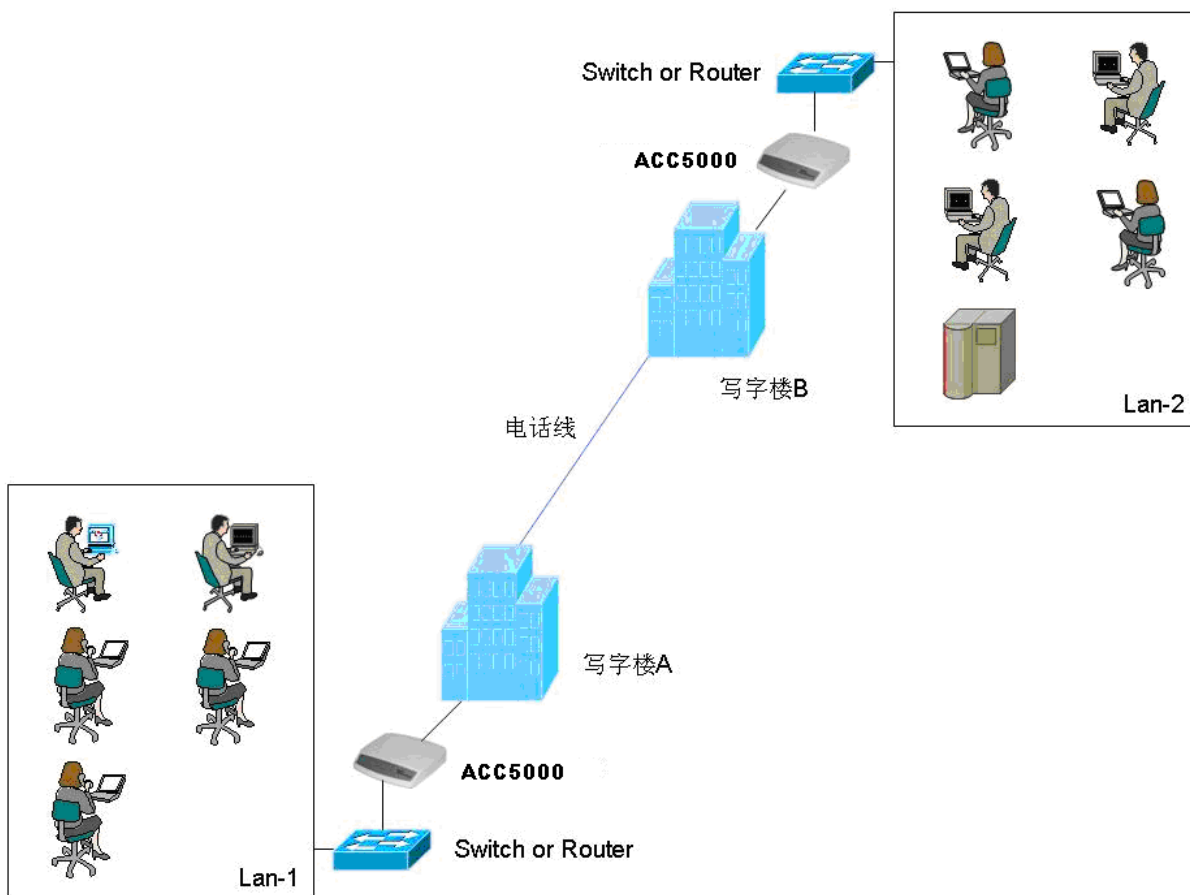
技术特点:

与第一代的 ADSL 相比,用相同长度的电话线,提供更快速的数据传输
CO 和 CPE 的选择模式,为两个远距离的场所提供点对点连接
2-wire / 4-wire / 8-wire M-Pair 选择模式提供了灵活的速度传输速率
支持双 web-based GUI 和 CLI-based 管理功能
与上一代的 G.SHDSL 完全兼容.

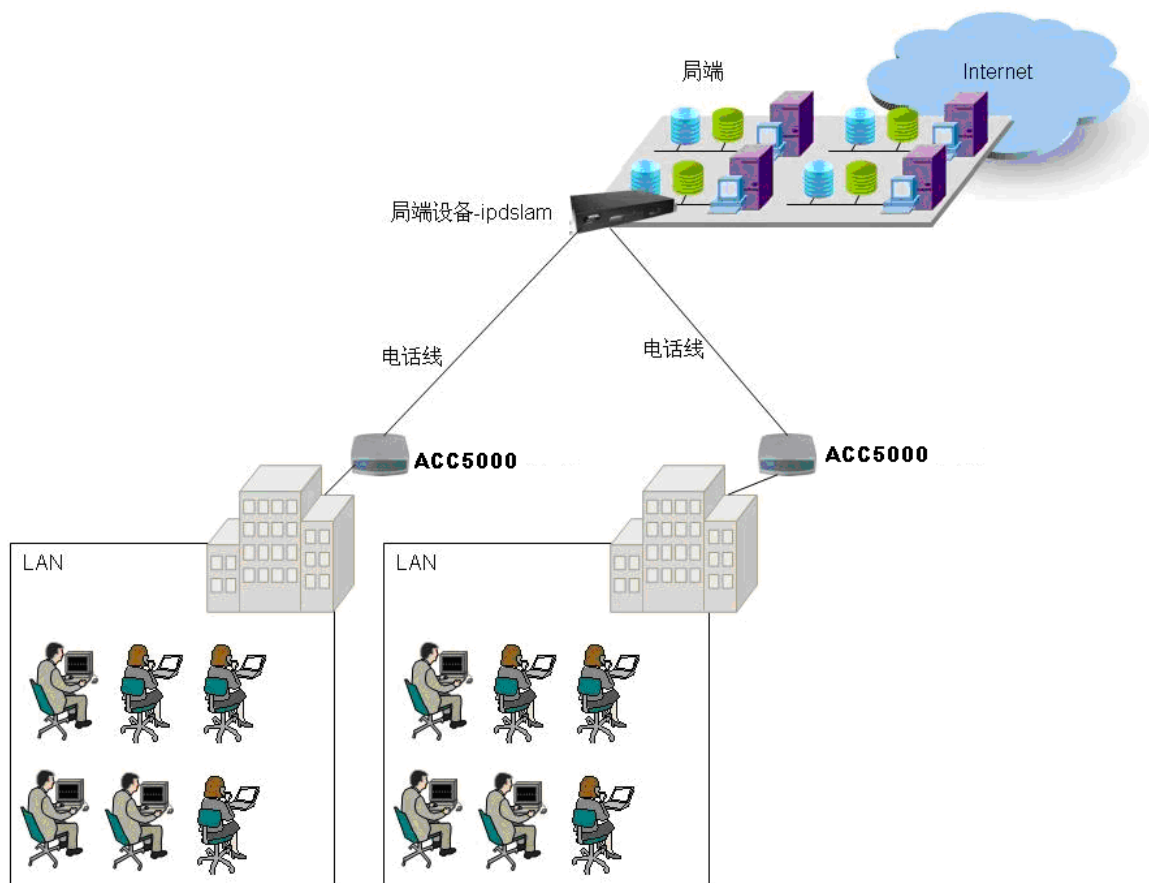
典型应用:



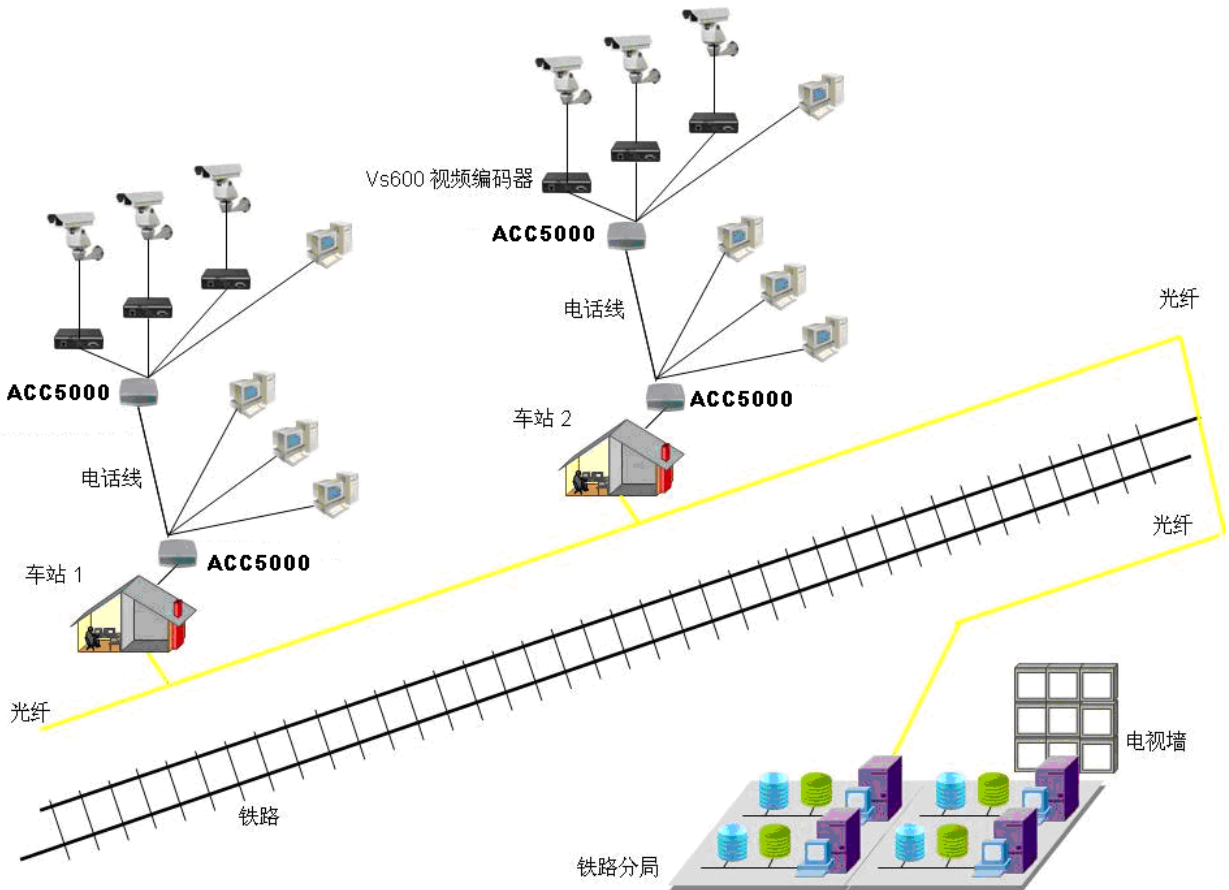
局域网延伸方案



Internet 访问方案



铁路监控方案








技术参数:

Standard Compliance	Protocol
<p>ITU-T G.991.2</p> <ul style="list-style-type: none"> Transmission rate up to 5.69 Mbps on 2-wire Transmission rate up to 11.38 Mbps on 4-wire Transmission rate up to 22.76 Mbps on 8-wire Support of Annex A, Annex B, Annex F, Annex G Auto load balancing with bonded pairs Support point-to-point configuration 	<ul style="list-style-type: none"> Support ATM over G.SHDSL.bis and G.SHDSL MAC bridging(IEEE 802.3 and 802.1D) PPPoE (RFC 2416) RFC 1483/2684 Bridged encapsulation (routing mode optional) IP support TCP, RIPv1, RIPv2, UDP, ICMP, ARP, RTP IEEE802.1P Priority Output Queuing IEEE 802.1Q VLAN IEEE802.3u Fast Ethernet 100BaseT MAC Filtering QoS support VBR-rt, VBR-nrt, CBR and UBR Support 8 PVCs NAT/PAT support DHCP client/server and DHCP relay functionality VPN pass-through IPSec and L2TP Support IGMP Snooping
<p>Maintenance</p> <ul style="list-style-type: none"> Firmware upgradeable via FTP or TFTP (optional) Support Telnet Support ATM OAM F5 End to End and Segment loopbacks Statistics on DSL link and data ports Sys-log HTTP web downloadable 	
<p>Management</p>	

Password protection PAP and CHAP support Remote access management via telnet SNMPv1 Firewall Security MIB-II (RFC 1213, RFC 1573) Web based GUI Command Line Interface (CLI)	DMZ support IPSec VPN Support Support Port-based VLAN
Operating Requirements	
Operating temperature: 0C to +50C Operating humidity: 5% to 90% RH non-condensing	
Hardware Interface	
DSL interface: 2/4 wires one RJ-11 jack. 8 wires two RJ-11 jacks Ethernet interface: four RJ-45 jack; 10/100BaseT auto sensing and crossover AC power adapter (100VAC ~ 240VAC, 50-60Hz) One craft Interface for local console access (CID)	Dimensions: 35mm(H)×210mm(W)×193mm(D) Weight: 914
LED	
LED indicator; power, DSL links, Alarm, Ethernet ports and CO/CPE mode	

订购信息:

产品型号	详述
ACC5000-4W	SHDSL, 支持 4 个 LAN 口, 1 个 RG11 口, 最多支持 4 线
ACC5000-8W	SHDSL, 支持 4 个 LAN 口, 2 个 RG11 口, 最多支持 8 线

 北京森润达世纪信息技术有限公司
 010-59795789
 18901275566
 www.srdit.com
 w12h12j@126.com